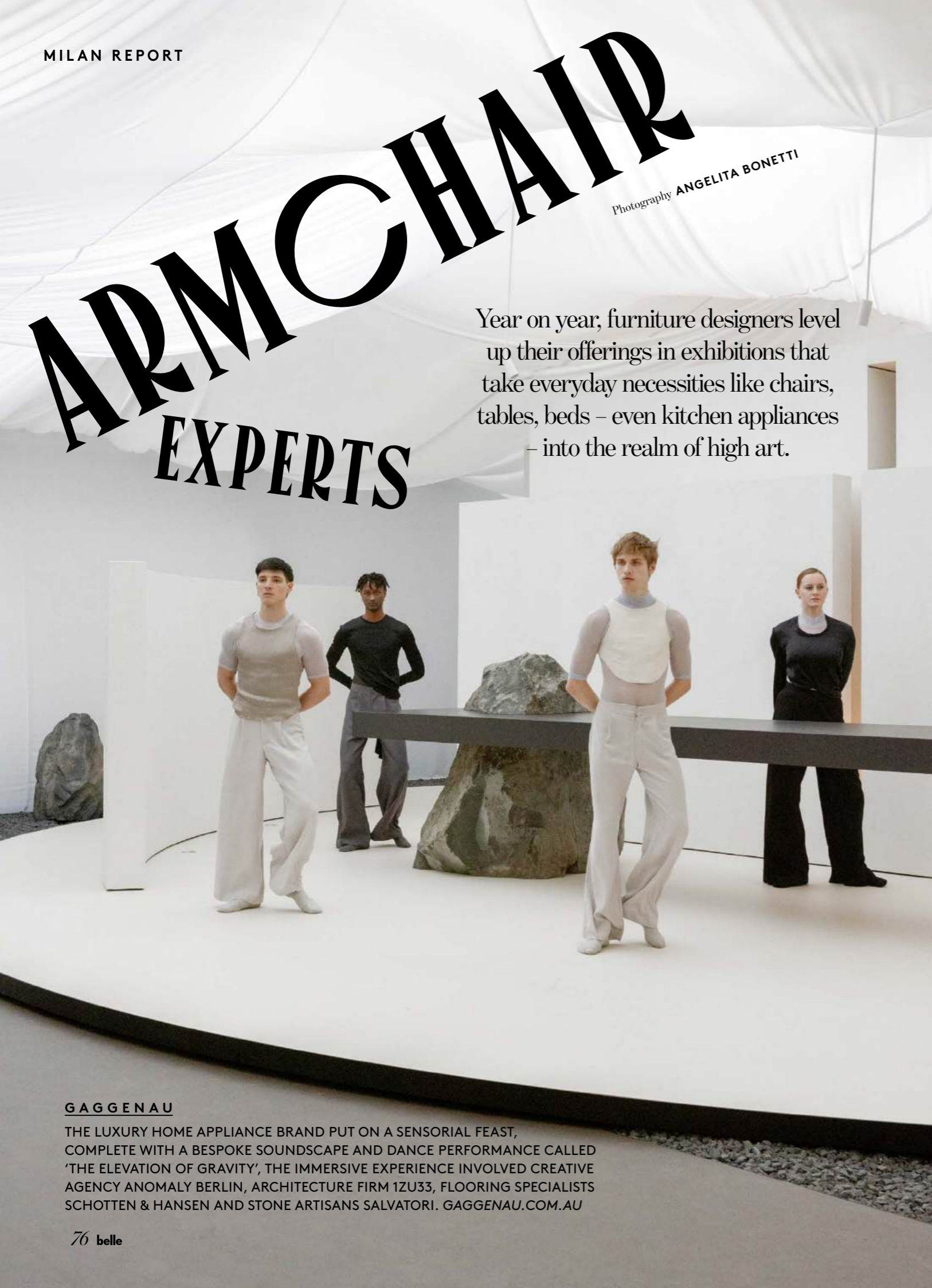


# ARMCHAIR EXPERTS

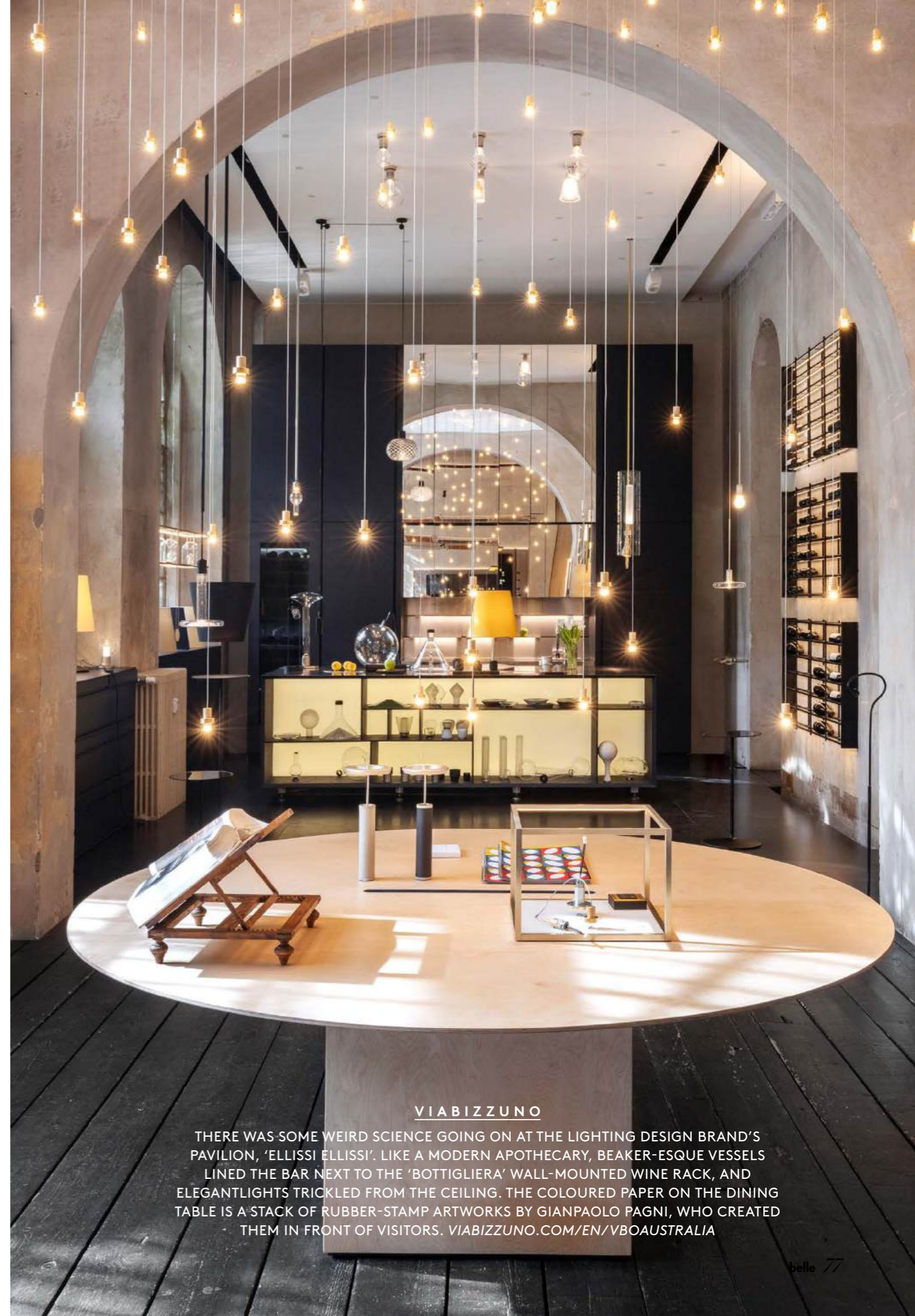
Photography ANGELITA BONETTI

Year on year, furniture designers level up their offerings in exhibitions that take everyday necessities like chairs, tables, beds – even kitchen appliances – into the realm of high art.



## GAGGENAU

THE LUXURY HOME APPLIANCE BRAND PUT ON A SENSORIAL FEAST, COMPLETE WITH A BESPOKE SOUNDSCAPE AND DANCE PERFORMANCE CALLED 'THE ELEVATION OF GRAVITY'. THE IMMERSIVE EXPERIENCE INVOLVED CREATIVE AGENCY ANOMALY BERLIN, ARCHITECTURE FIRM 1ZU33, FLOORING SPECIALISTS SCHOTTEN & HANSEN AND STONE ARTISANS SALVATORI. [GAGGENAU.COM.AU](http://GAGGENAU.COM.AU)



## VIABIZZUNO

THERE WAS SOME WEIRD SCIENCE GOING ON AT THE LIGHTING DESIGN BRAND'S PAVILION, 'ELLISSI ELLISSI'. LIKE A MODERN APOTHECARY, BEAKER-ESQUE VESSELS LINED THE BAR NEXT TO THE 'BOTTIGLIERA' WALL-MOUNTED WINE RACK, AND ELEGANT LIGHTS TRICKLED FROM THE CEILING. THE COLOURED PAPER ON THE DINING TABLE IS A STACK OF RUBBER-STAMP ARTWORKS BY GIANPAOLO PAGNI, WHO CREATED THEM IN FRONT OF VISITORS. [VIABIZZUNO.COM/EN/VBOAUSTRALIA](http://VIABIZZUNO.COM/EN/VBOAUSTRALIA)



**ELLE DECOR ITALIA**

THE INTERIORS PUBLICATION WORKED WITH THREE DESIGN STUDIOS FOR ITS EXHIBITION, 'MATERIAL HOME'. INTERIOR DESIGNER ELISA OSSINO, LIGHTING DESIGNER ROSSI BIANCHI AND LANDSCAPE DESIGNER ANTONIO PERAZZI CREATED SEVEN ROOMS, EACH WITH A DEDICATED MATERIAL THEME: POWDERS, SURFACES, MARBLE IN MOVIES, REFLECTIONS, SOFT, ORGANIC AND HUES. [ELISAOSSINO.IT](http://ELISAOSSINO.IT); [ROSSIBIANCHI.COM](http://ROSSIBIANCHI.COM); [ANTONIOPERAZZI.COM/EN](http://ANTONIOPERAZZI.COM/EN)

**DRAGA & AUREL**

THE FOUNDERS OF THIS MULTIDISCIPLINARY ART, DESIGN AND FURNITURE STUDIO AND WORKSHOP, DRAGA OBRADOVIC AND AUREL K. BASEDOW, IN COLLABORATION WITH ARCHITECT GIULIANO ANDREA DELL'UVA, SET UP "AN APARTMENT OF WONDERS" AT ROSSANA ORLANDI GALLERY. FEATURED IN THE INSTALLATION ARE PIECES FROM THEIR NEW COLLECTION, 'LEWIT', AND STRIKING PAINTINGS BY BASEDOW. [DRAGA-AUREL.COM](http://DRAGA-AUREL.COM)



**HENRYTIMI**

IN AN ATTEMPT TO ELEVATE NATURAL MATERIALS TO THE STATUS OF ART OBJECT, THE FOUNDER OF THIS EONYMOUS STUDIO INCORPORATED A PATINATED MIRROR AND STONE FOR A HARMONIOUS DISPLAY OF LIGHT AND SHADOW, REFLECTION AND VOID IN WHAT HE REFERS TO AS "MATERIAL MINIMALISM", INSPIRED BY ARCHAEOLOGY. [HENRYTIMI.COM](http://HENRYTIMI.COM)

**ALESSANDRO CIFFO**

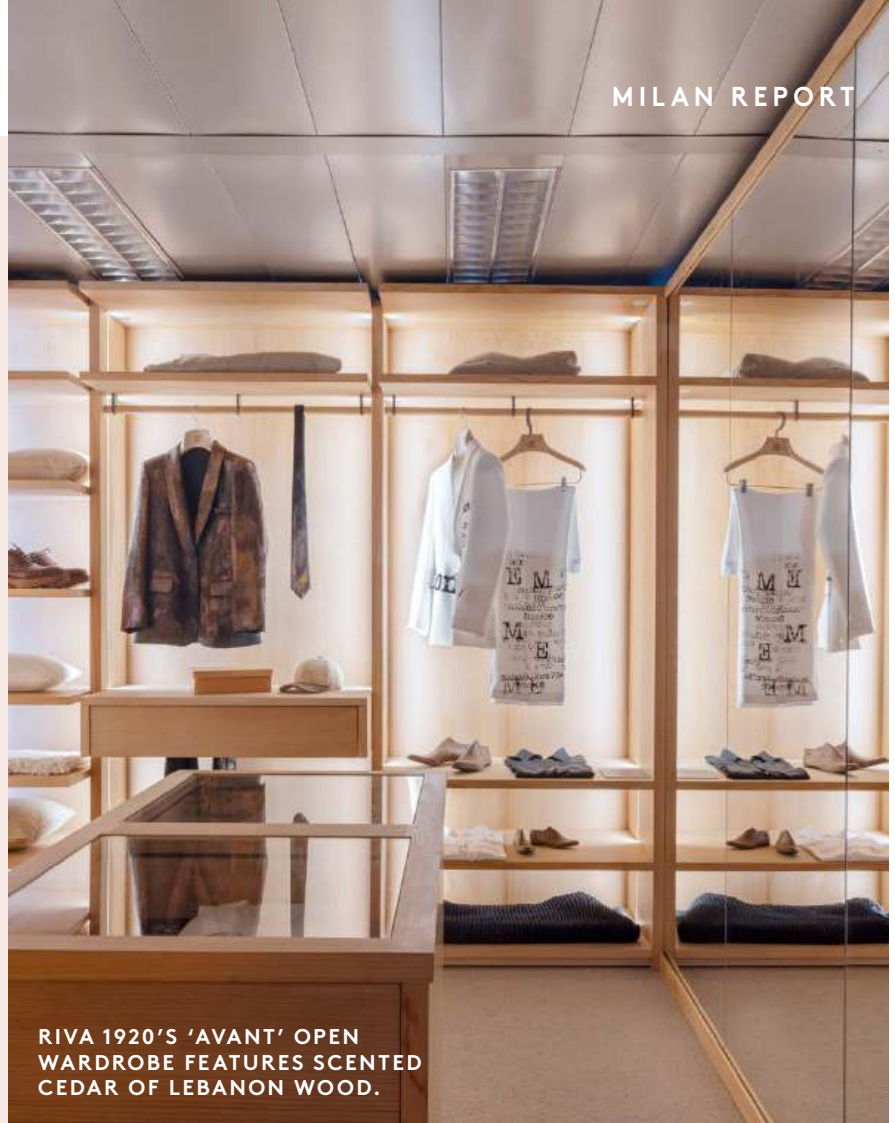
AT ROSSANA ORLANDI ART GALLERY, ALESSANDRO CIFFO'S EXHIBITION, 'LA BÜRSCH', SHOWED A DOMESTIC SPACE THAT APPEARED TO BE CREATED ENTIRELY FROM MONOLITHIC MARBLE, BUT WAS ACTUALLY CLEVER HYPERREALISM MADE FROM REGENERATED SILICONE. (EAGLE-EYED FANS WOULDN'T HAVE BEEN SURPRISED GIVEN SILICONE IS CIFFO'S PREFERRED, AND ONLY, MEDIUM.) @ALESSANDROCIFFO/SILICONE

PAOLA LENTI

THIS COLLECTIVE OF WEAVERS, ARCHITECTS, UPHOLSTERERS, TAILORS AND ENGINEERS TAKES LEISURE VERY SERIOUSLY. THE NEW 'BALEARI' SEATING SERIES FEATURES THE BRAND'S SIGNATURE HANDWOVEN ROPE BELTS IN VIBRANT HUES WITH HIGH GLOSS FRAMES. PICTURED HERE ARE THE LOUNGE CHAIRS, AND THERE IS ALSO A CHAISE LONGUE. [DEDECE.COM](http://DEDECE.COM)



KRISTALIA 'DIMORA' BED BY CRISTINA CELESTINO.



RIVA 1920'S 'AVANT' OPEN WARDROBE FEATURES SCENTED CEDAR OF LEBANON WOOD.

KRISTALIA '1085' ARMCHAIR BY BARTOLI DESIGN.

**TREND**

QUIET LUXURY

**DETAILS**

WITH A PRIMARILY NEUTRAL PALETTE AND SLEEK FABRICATIONS, FANULI'S PARTNER BRANDS EMBRACED FORM AND TEXTURE FOR INDIVIDUAL EXHIBITIONS THAT PROVED NATURAL DOESN'T MEAN DULL.

[FANULI.COM.AU](http://FANULI.COM.AU)

FLEXFORM 'PERRY' MODULAR SOFA BY ANTONIO CITTERIO.



BOFFI KITCHEN WITH RETRACTABLE DOORS TO HIDE THE SHELVING (THOUGH IT'S SO BEAUTIFUL WHY WOULD YOU WANT TO?)



DE PADOVA LIVING ROOM WITH 'ISHI STONE' BY NENDO COFFEE TABLE AND 'DROP PAPER LAMP' FROM TIME & STYLE.

DE PADOVA DRESSING AREA WITH 'SEN' TABLES BY KENSAKU OSHIRO.

**TREND**

NO SHARP OBJECTS

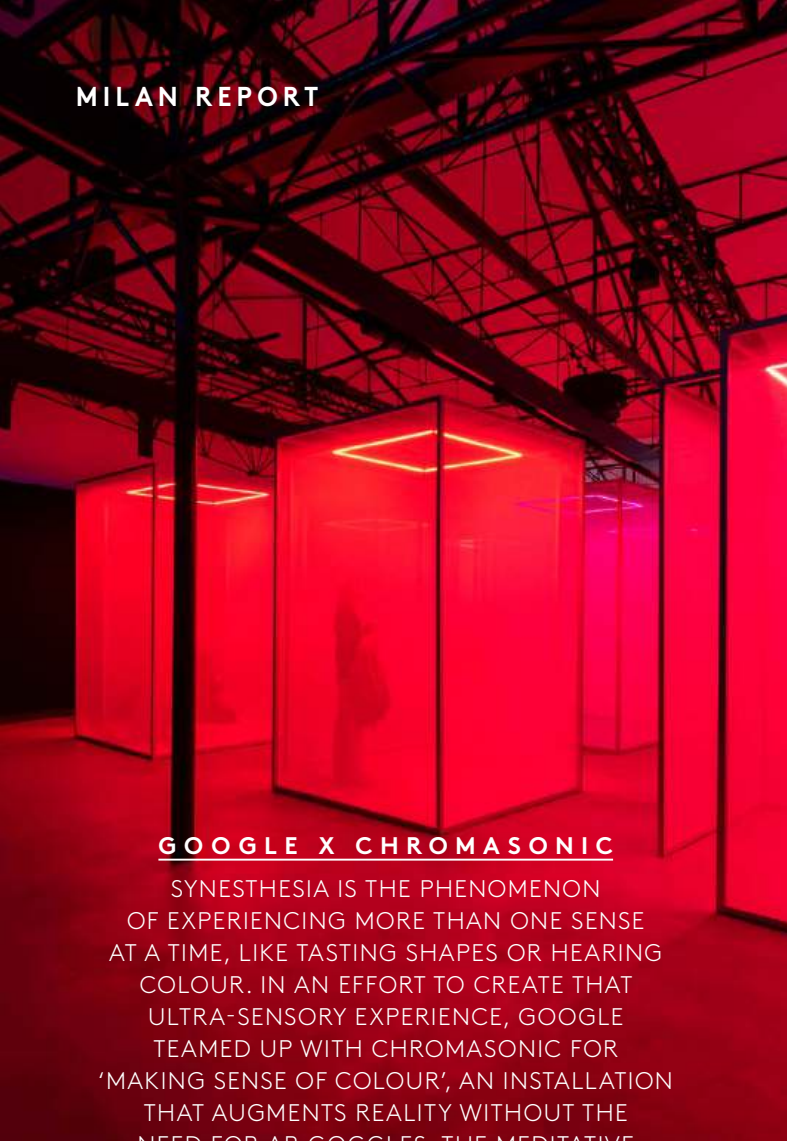
**DETAILS**

WITH BOFFI ON KITCHENS, BATHROOMS AND WARDROBES, ADL DESIGN ON SMART DOOR SYSTEMS AND DE PADOVA ON FURNITURE, THIS FAMILY OF BRANDS HAS ALL BASES COVERED FOR A BEAUTIFUL HOME, WHERE CURVED SURFACES CREATE A SENSE OF CALM. THE GROUP CELEBRATED BOFFI'S 90TH ANNIVERSARY WITH THIS DISPLAY, CALLED 'A WAY OF LIVING'. [BOFFI.COM](http://BOFFI.COM)



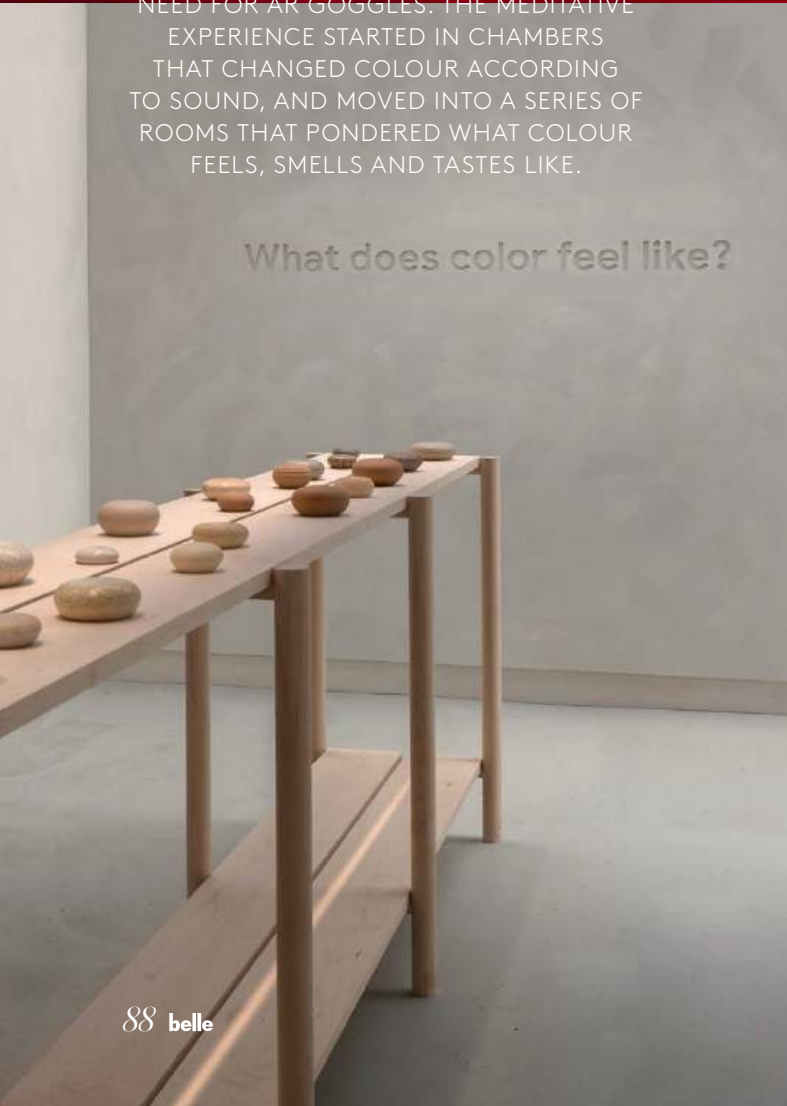
BOFFI BATHROOM WITH BACKLIT 'LOTUS' MIRROR BY NAOTO FUKASAWA.





**GOOGLE X CHROMASONIC**

SYNESTHESIA IS THE PHENOMENON OF EXPERIENCING MORE THAN ONE SENSE AT A TIME, LIKE TASTING SHAPES OR HEARING COLOUR. IN AN EFFORT TO CREATE THAT ULTRA-SENSORY EXPERIENCE, GOOGLE TEAMED UP WITH CHROMASONIC FOR 'MAKING SENSE OF COLOUR', AN INSTALLATION THAT AUGMENTS REALITY WITHOUT THE NEED FOR AR GOGGLES. THE MEDITATIVE EXPERIENCE STARTED IN CHAMBERS THAT CHANGED COLOUR ACCORDING TO SOUND, AND MOVED INTO A SERIES OF ROOMS THAT PONDERED WHAT COLOUR FEELS, SMELLS AND TASTES LIKE.



MILAN REPORT

'DUDET' ARMCHAIR BY PATRICIA URQUIOLA.



TREND

BOLD & BEAUTIFUL

DETAILS

COLOUR, SHAPE AND TEXTURE CAME TO THE FORE AT THE CASSINA PERSPECTIVE 2024. THE ESTEEMED FURNITURE COMPANY WHEELED OUT SOME OF ITS MOST SUCCESSFUL DESIGNERS - THINK PATRICIA URQUIOLA AND MICHAEL ANASTASSIADES - TO DISPLAY SOME OF THEIR MOST INTERESTING NEW PIECES. THE EXHIBITION ALSO SAW THE RETURN OF REINVENTED ICONS LIKE CARLO SCARPA'S 'CORNARO' SOFA. MOBILIA.COM.AU



CONSOLE BY PATRICIA URQUIOLA FROM HER 'HAYAMA' COLLECTION.



'TABLE MONTPARNASSE' AND 'VASE À FLEURS ÉCHANCRÉ' BY CHARLOTTE PERRIAND, 'FLUTZ' CHAIRS BY MICHAEL ANASTASSIADES AND 'GALAXY' PENDANT LIGHT BY CHARLES AND RAY EAMES.



CARLO SCARPA 'CORNARO' SOFA, MICHAEL ANASTASSIADES 'ORDINAL' LOW TABLE AND BRADLEY L. BOWERS 'BROLIC' VASE.



TECHNOGYM'S AESTHETICALLY PLEASING WEIGHT RACK AND SURPLUS OF MEDICINE BALLS AT THE 40TH ANNIVERSARY PARTY.



**TREND**

EVERYDAY, ELEVATED

**DETAILS**

THE PROBLEM WITH WORKING OUT AT HOME IS THAT EQUIPMENT CAN BE CAPITAL-U UGLY SO TECHNOGYM ASKED 40 DESIGNERS TO REIMAGINE ITS WEIGHT BENCH (TOP LEFT). IT ALSO HOSTED ITS 40TH ANNIVERSARY PARTY (TOP RIGHT). FHIABA JUMPED ON THE HOME GLAMORISATION TREND WITH PRECIOUS METAL-HUED FRIDGES AND WINE COOLERS (BELOW AND RIGHT). [TECHNOGYM.COM/EN-AU](http://TECHNOGYM.COM/EN-AU); [FHIABA.COM.AU](http://FHIABA.COM.AU)



FHIABA GOES FOR GOLD (AND SILVER AND BRONZE) FRIDGES.

FHIABA'S WINE REFRIGERATION AND STORAGE SYSTEM.



**USM**

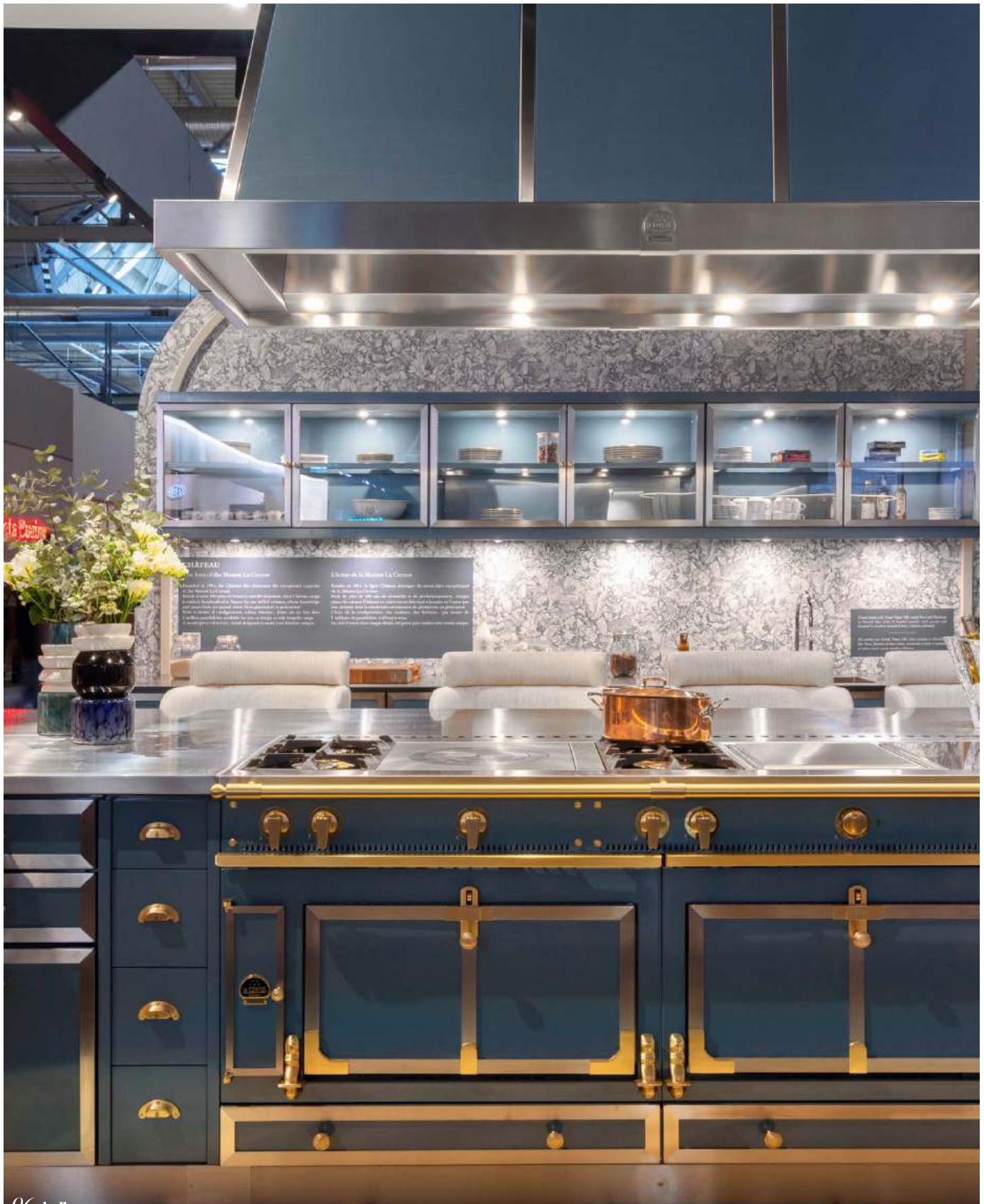
THE SWISS DESIGN COMPANY REFERS TO ITS MODULAR FURNITURE SYSTEM AS 'MICRO-ARCHITECTURE', AND IT'S EASY TO SEE WHY: WITH ALMOST ENDLESS FORMATIONS, EACH ELEMENT CAN BE TRANSFORMED TO SUIT ITS USER'S PURPOSE. TO DEMONSTRATE, THE BRAND CREATED AN INTERACTIVE SPACE WHERE VISITORS SAW THE PIECES ADAPTED IN REAL TIME, WITH PEEPHOLES, DOORS AND PULL-OUTS FOR ADDED FUN. [ANIBOU.COM.AU](http://ANIBOU.COM.AU)



DESTINATION

# LA CORNUE

*Ahead of the biennial exhibition EuroCucina, which celebrates the latest in kitchen design, the luxury French oven brand La Cornue showed off its 'Anywhere' cooktop at a pre-event cocktail party. It also revealed new cabinetry and colourways for its Chateau and CornuFé lines. How delicious! eands.com.au*



DESTINATION

# NILUFAR GALLERY

*Curated by the gallery's founder, Nina Yashar, the 'Time Traveler' exhibition was a contemplation of how design can form connections across time, culture, continents and creative expression. It was an invitation to consider echos of past influences and the future of design. nilufar.com*



**TREND**

PAST AND PRESENT

**DETAILS**

CLOCKWISE FROM TOP: THE PIECES IN ANESTIS MICHALIS'S SCULPTURAL SERIES 'LIKE FRIENDS YOU KNOW' WERE CREATED THROUGH A PROCESS OF ADDING AND SUBTRACTING CLAY. OBJECTS OF COMMON INTEREST SHOWED 'PURPLE NEBULA', INSPIRED BY THE COSMOS, EXPRESSED IN A MONOCHROMATIC AND SLIGHTLY ALIEN DINING ROOM. OSANNA VISCONTI UNVEILED ROVI, HER COLLECTION OF CAST-BRONZE PIECES, REMINISCENT OF THE THORNS THAT PROTECT THE ROSE.